



LIGHTS | SFX | TRUSS



Vinayak Effects is the premier one-stop, full service, in-house lighting and production company in India. We are committed to providing the best lighting design, production and technical know-how to ensure the success of every event.

Vinayak Effects is fast emerging Trader, Supplier and Importer of LED Lights, LED City Colour, Broadcast Lights, DJ Lights, LED Wall Washer, Controllers, Lighting Accessories, Moving Heads, Stage Lights and Theatre Lights in India. We offer a wide range, meticulously designed at our reputed vendors' end for use in different places. These products are appreciated in the global markets for their superior quality, captivating design, stunning light fixture, polishing touch, high translucency, brightness and low power consumption. Owing to our dedication and proficiency to make our clients satisfied with quality service have earned us a huge clientele from engineering, construction, domestic & commercial and varied other sectors. Our vendors specialize in flawless finishing of the entire product line as per the specifications provided by the clients. Hence, they make sure that these lights are manufactured utilizing the best industry resources at their advanced manufacturing unit.

We commenced operations in the 1998 as SHIVA SYSTEMS™ a professional Sound and Lights Management Company. In the early 2000's, we diversified into larger events; award functions, concerts, fashion shows, corporate launches, exhibitions & TV shows. Since then, there has been no looking back. We have been providing creative & imaginative technical solutions for the biggest, most prestigious and high-demand products in India. Our company is committed to providing a first class service in every aspect of the product, from interacting with clients to the overall visual impact of the completed product.

Vinayak Effects products are used by the top vendors which cater multiple venue/shows for audience varying from 30 to 3000 handled by our highly trained and efficient Engineers & Technicians.

Vinayak Effects Combines product quality with service quality. Customers may request in-depth technical analysis and advice specific to their projects completely free of charge, as well as timely after sales technical assistance. The S-PRO® support team organizes demonstrations & workshops both at the S-PRO® headquarters and at customers' offices, and takes part in shows and trade fairs.

Whether directly or in collaboration with its distribution network, S-PRO® regularly connects with Lighting Designers, Photography Directors, Architects & all lighting installation specifiers in general. The company's technical-sales personnel keep these important professional figures up to date on all the latest innovations that

Vinayak Effects offers them for increasingly effective shows and to express their creativity brilliantly.

Vinayak Effects headquarters has a live Demo room where you can see & choose the light that suits your requirement.

Truly, excellence unmatched.

READILY AVAILABLE SPARES | EASILY ACCESSIBLE SERVICE CENTER



INDEX



LED PAR Cans	1-6
Moving Head	7-9
Strobe / Wash / Laser	10
Wall Washer	11
LED Crazy Bar	12
Follow/Blinders	13-14
Pro Effect Lights	15-16
Light Controllers	17
Laser / Splitter	18
Smoke Machines	19-21
Special Effects	22-27
Clamps	28
Hoist & Stand	29
Stand	30
Consumables	31



LED PAR CANS



S 102 SHIMMER

3W x 54 RGBW LED PAR

TECHNICAL SPECIFICATIONS

Voltage	: AC110v/220V
Frequency	: 50Hz-60Hz
Consumption	: 200W
Lamp	: 3W x 54 pcs LED(R12,G14,B14,W14)
Channel	: 8CH
Function	: DMX512 control, automatic, voice control Can make magic, colour mixed, charming effect
Housing Material	: Aluminium alloy
Product Size (mm)	: 250 x 250 x 360
Package	: 4Pcs/Carton



S 102 SPARKLE

3W x 54 RGBW LED PAR

TECHNICAL SPECIFICATIONS

Voltage	: AC110v/220V
Frequency	: 50Hz-60Hz
Consumption	: 200W
Lamp	: 3W x 54 pcs LED(R12,G14,B14,W14)
Channel	: 8CH
Function	: DMX512 control, automatic, voice control Can make magic, colour mixed, charming effect
Housing Material	: Aluminium alloy
Product Size (mm)	: 250 x 250 x 360
Package	: 4Pcs/Carton



S 100

3W x 54 WW PAR

TECHNICAL SPECIFICATIONS

Voltage	: AC110v/220V
Frequency	: 50Hz-60Hz
Consumption	: 200W
Lamp	: 3W x 54 pcs Warm White LED
Channel	: 8CH
Function	: DMX512 control, automatic, voice control
Housing Material	: Aluminium alloy
Product Size (mm)	: 250 x 250 x 360
Package	: 4Pcs/Carton
Inner Box (cm)	: 22 x 22 x 30



LED PAR CANS



S 101

3W x 54 LED PAR WATERPROOF

TECHNICAL SPECIFICATIONS

Voltage	: AC110v/220V
Frequency	: 50Hz-60Hz
Consumption	: 200W
Lamp	: 3W x 54 pcs LED(R12,G18,B18,W6)
Channel	: 8CH
Function	: DMX512 control, automatic, voice control Can make magic, colour mixed, charming effect
Housing Material	: Aluminium alloy Slim
Product Size (mm)	: 340 x 240 x 360
Package	: 4 Pcs/Carton



S 024

3W x 54 UV PAR

TECHNICAL SPECIFICATIONS

Voltage	: AC110v/220V
Frequency	: 50Hz-60Hz
Consumption	: 200W
Lamp	: 3W x 54 pcs Ultra Violet LED
Channel	: 8CH
Function	: DMX512 control, automatic, voice control
Housing Material	: Aluminium alloy
Product Size (mm)	: 250 x 250 x 360
Package	: 4 Pcs/Carton
Inner Box (cm)	: 22 x 22 x 30



S 023

3W x 60 LED PAR RGB MULTI

TECHNICAL SPECIFICATIONS

Voltage	: AC110v/220V
Frequency	: 50Hz-60Hz
Consumption	: 200W
Lamp	: 3W x 60 pcs
Channel	: 7CH
Function	: DMX512 control, automatic, voice control Can make magic, colour mixed, charming effect
Housing Material	: Aluminium alloy
Product Size (mm)	: 250 x 250 x 360



LED PAR CANS



S 012

3W x 54 WW PAR

TECHNICAL SPECIFICATIONS

Voltage	: AC110v/220V
Frequency	: 50Hz-60Hz
Consumption	: 200W
Lamp	: 3W x 54 pcs Warm White LED
Channel	: 8CH
Function	: DMX512 control, automatic, voice control
Housing Material	: Aluminium alloy
Product Size (mm)	: 250 x 250 x 360
Package	: 4 Pcs/Carton
Inner Box (cm)	: 22 x 22 x 30



S 019

3W x 60 LED PAR RGB MULTI

TECHNICAL SPECIFICATIONS

Voltage	: AC110v/220V
Frequency	: 50Hz-60Hz
Consumption	: 200W
Lamp	: 3W x 60 pcs LED(R12,G14,B14,W14)
Channel	: 7CH
Function	: DMX512 control, automatic, voice control Can make magic, colour mixed, charming effect
Housing Material	: Aluminium alloy
Product Size (mm)	: 250 x 250 x 360



S 018

3W x 60 LED PAR RGB MULTI

TECHNICAL SPECIFICATIONS

Voltage	: AC110v/220V
Frequency	: 50Hz-60Hz
Consumption	: 200W
Lamp	: 3W x 60 pcs
Channel	: 7CH
Function	: DMX512 control, automatic, voice control Can make magic, colour mixed, charming effect



LED PAR CANS



S 008

3W x 54 RGBW LED PAR WATERPROOF

TECHNICAL SPECIFICATIONS

Voltage	: AC110v/220V
Frequency	: 50Hz-60Hz
Consumption	: 200W
Lamp	: 3W x 54 pcs LED(R12,G18,B18,W6)
Channel	: 8CH
Function	: DMX512 control, automatic, voice control Can make magic, colour mixed, charming effect
Housing Material	: Aluminium alloy
Product Size (mm)	: 340 x 240 x 360



S 025

3W x 36 LED PAR WATERPROOF

TECHNICAL SPECIFICATIONS

Voltage	: AC110v/220V
Frequency	: 50Hz-60Hz
Consumption	: 120W
Lamp	: 3W x 36 pcs
Channel	: 7CH
Function	: DMX512 control, automatic, voice control Can make magic, colour mixed, charming effect
Housing Material	: Aluminium alloy
Product Size (mm)	: 250 x 250 x 360



S 014

3W x 54 LED PAR WATERPROOF

TECHNICAL SPECIFICATIONS

Voltage	: AC110v/220V
Frequency	: 50Hz-60Hz
Consumption	: 60W
Lamp	: 3W x 54 pcs 3 IN 1 LED
Channel	: 7CH
Function	: DMX512 control, automatic, voice control Can make magic, colour mixed, charming effect
Housing Material	: Aluminium alloy
Product Size (mm)	: 250 x 250 x 360



LED PAR CANS

S 015

3W x 54 WW PAR

TECHNICAL SPECIFICATIONS

Voltage	: AC110v/220V
Frequency	: 50Hz-60Hz
Consumption	: 150W
Lamp	: 3W x 54pcs LED (R12,G14,B14,W14)
Channel	: 8CH
Function	: DMX512 control, automatic, voice control, Can make magic, colour mixed, charming effect
Housing Material	: Aluminium alloy
Product Size (mm)	: 250 x 250 x 360
Package	: 4 Pcs/Carton
Inner Box (mm)	: 245 x 245 x 355
Carton Size (mm)	: 520 x 520 x 380



PAR 180

3W x 54 LED PAR RGB MULTI

TECHNICAL SPECIFICATIONS

Voltage	: AC110v/220V
Frequency	: 50Hz-60Hz
Consumption	: 200W
Lamp	: 3W x 54 pcs LED(R12,G14,B14,W14)
Channel	: 7CH
Function	: DMX512 control, automatic, voice control Can make magic, colour mixed, charming effect
Housing Material	: Aluminium alloy
Product Size (mm)	: 250 x 250 x 360



RGBWW NEW LED PAR

3W x 60 LED PAR RGB MULTI



LED PAR CANS



S 006

50W x 4 LED PAR
WW



S 005

50W x 4 LED PAR
WW-CW



S 009

50W x 4 LED PAR
RGB MULTI



MOVING HEAD



7R/10R/14R/17R SUPER BEAM 230 SHARPY WITH FLIGHT CASE

TECHNICAL SPECIFICATIONS

Voltage	: Ac 1100v-240v50/60hz
Power	: 230w lighting 7R Osram
DMX Channel Mode	: 16 channel stand alone operation with master slave function
Pan and Tilt Movement	: 8 and 16 bit resolution Pan 360/450 optional Tilt : 270 Speed of pan/tilt movement adjustable Scan position memory, auto reposition after unexpected movement
Colour	: Basic colour wheel with 12 dichroic mirrors, plus white, two direction rainbow effect
Static Gobo	: 14 static gobos plus open with different speed gobo shaking and gobo indexing prism and prism rotation, with 8/6/24 prism macros. linear dimmer in precise speed from 0%-100%. stepless frost 0%-100% linear change first. stable/shutter, high speed shutter, 0-13Hz random strobe. Touch screen LED display, display can be changed 180 reverse to fit for different installation position
Auto-program	: 8 pre-built programs can be selected software-upload by optional accessory via DMX line



12R 330W SHARPY HIGH SPEED WITH FLIGHT CASE

TECHNICAL SPECIFICATIONS

Voltage	: AC100V-240V 50/60Hz
Power Consumption	: 330W Lighting 12R YODN Lamp
DMX Channels Mode	: 16/20 channels stand alone operation with Master-Slave function, sound activated via built in microphone
Pan & Tilt Movement	: 8 & 16 bit resolution Pan : 360/450 optional Tilt : 270 Speed of pan/tilt movement adjustable. Scan position memory, auto reposition after unexpected movement
Colour	: Basic colour wheel with 12 dichroic mirrors, plus white, two direction rainbow effect
Static Gobo	: 14 static gobo plus open with different speed gobo shaking & gobo indexing. Prism & prism rotation, with 8/16/24 prism macros. Linear dimmer in precise speed from 0%-100%. Stepless frost, 0%-100% linear change frost. Stable/ shutter, High speed shutter, 0-13Hz random strobe. Touch Screen LED display, display can be changed 180 reverse to fit for different installation position.
Auto-program	: 8 pre-buit programs can be selected Software-upload by optional accessory via DMX line



MOVING HEAD



16R YODN UBER 330W SHARPY HIGH SPEED WITH FLIGHT CASE

TECHNICAL SPECIFICATIONS

Voltage	: AC100V-240V 50/60Hz
Power Consumption	: 330W Lighting 16R YODN lamp
DMX Channels Mode	: 16/20 channels stand alone operation with Master/Slave function, sound activated via built in microphone
Pan & Tilt Movement	: 8 and 16 bit resolution Pan : 360/450 optional Tilt : 270 Speed of pan/tilt movement adjustable. Scan position memory, auto reposition after unexpected movement
Colour	: Basic colour wheel with 12 dichroic mirrors, plus white, two direction rainbow effect
Static Gobo	: 14 static gobo plus open with different speed gobo shaking & gobo indexing. Prism and prism rotation, with 8/16/24 prism macros. Linear dimmer in precise speed from 0%-100%. Srepless frost, 0%-100% linear change frost. Stable/ shutter, High speed shutter, 0-13Hz random strobe. Touch Screen LED display, display can be changed 180 reverse to fit for different installation position.
Auto-program	: 8 pre-buit programs can be selected Software-upload by optional accessory via DMX line



WIDE LENS

18R 3IN1 MOVING HEAD (BEAM, SPOT, WASH) WITH FLIGHT CASE

TECHNICAL SPECIFICATIONS

Voltage	: AC100V-240V, 50/60Hz
Light Source	: MSD 350W 17R YODN new integrated light bulbs
Features	: Frost / Zoom/ Focus available
Beam Angle	: 0°-42°
Linear Dimming	: 0-100%.
Strobe	: Pulse strobe, synchronous & asynchronous frequency flash strobe, 1-20 times per second speed
Fixed Gobo Wheel	: 16 gobos + white
Effect Wheel	: 1 rotating gobo wheel + 1 fixed gobo wheel
Communication Design	: Equipped with DMX 3 core & 5 core signal transmission
Rotation Angle	: Pan 540°, Tilt 270°
Display Interface	: The use of ultra wide LCD
LCD Display	: 2.8 inch Touch screen
Cooling System	: Built-in convection fan, with overheat protection function



18R BEAM 350 SHARPY HIGH SPEED WITH FLIGHT CASE

TECHNICAL SPECIFICATIONS

Voltage	: 100V-240V, 50/60Hz
Light source	: YODN 380W 187R YODN
Lens	: Quartz glass optical lens
Channel	: 16/22 Channels
Color Wheel	: 1 color wheel ,14 dichroic filters + open
Static Gobo Wheel	: 17 fixed gobos + open
Rotation Gobo Wheel	: 12 replaceable (including 2 glass gobos) + open & bidirectional gobos + open
Prism 1 / Prism2	: One 24 facet circular prism / One 8 facet circular prism
Beam Angle	: 2.5°-40° linear zoom
Rotation Angle	: Pan 540°, Tilt 270°
Other function	: Lamp on/off function and reset through controller, auto-run mode, master slave mode, sound mode



MOVING HEAD

30/60 WATT LED MOVING HEAD WITH GOBO

TECHNICAL SPECIFICATIONS

Voltage	: 110V-220V, 50-60Hz
Power	: 90W
Light source	: One 30W / 60W white lamp bead, 12 RGB 0.2W lamp beads
Colors	: 8 Colors
Gobos	: 8 Patterns
Channels	: 30W - 10/12 CH, 60W - 9/11 CH
Control Mode	: Sound activated, Master/Slave, Auto operation, DMX
Rotation Angle	: Pan 540°, Tilt 270°
Focus	: Manual Focusing



75/100/200 WATT LED MOVING HEAD

TECHNICAL SPECIFICATIONS

Light Source	: 1x75W LED
Beam angle	: 18 degrees
Control Channel mode	: 10/16 channels
Control mode	: DMX, Master/Slave, Sound Active, RDM
Software Upgrade	: Update Software through DMX Connection
Display Screen	: LED screen
Data In/Out	: 3-pin & 5-pin XLR
Multi-voltage Operation	: 100-240V, 50Hz/60Hz 100W
Main Features	: Strobe/Pulse effect; random strobe slow to fast
X/Y axis	: 540° / 270°
X/Y axis accuracy	: 16 bit precision scanning, magnetic positioning system, can accurately & automatically correct the position of X/Y-axis
Color Wheel	: 1 color wheel with 7 colors + open
Patterns Plate	: 1 static gobo wheel with 7 gobos + open gobo shake effect
Prism	: Triple prism, left & right rotation electronic focusing
Strobe Rate	: 0.3-20Hz excellent color macro effect of a fog slide mirror and a 7-color disc 0-100% smooth dimming, Independent atomization effect, Multi-speed stroboscopic effect, Integrating beam, pattern and dyeing functions



15 x 19 LED MOVING HEAD WASH

TECHNICAL SPECIFICATIONS

Main LED	: 19pcs 15W high brightness RGBW 4-in-1
LED Backlight	: 30pcs 0.18W RGB 3-in-1 LED
Channel	: 14/25 two channel
Control	: DMX512/Master-slave/Auto/Sound
Strobe	: 1-25 times/second
Pan / Tilt	: 540°/ 270° with 16bit rotate
Beam Angle	: 8-50°
Colour	: RGBW infinite mixture
Dimmer	: 0-100% linear dimming system
Display	: LCD display120
Working lifetime	: Average 50,000 hours with low power consumption
Protection	: Auto temperature control system with big cooling fan Quiet, smooth & fast PAN/TILT movement, Low noise & efficient fan cooling Built-in pre-programs with macro effects. IP20 protection rating 3-Pin XLR DMX input/output
Function	: With LED shutter, scan position memory and auto reposition. With backlight LED for perfect eye-candy effect use.
Net Weight	: 7.7 Kg
Gross Weight	: 9.5 Kg
Carton Package Size	: 38 x 26 x 47.5 cm



STROBE/WASH/LASER



**NEW MOVING
LED STROBE**
1W x 1000 LED PAR
RGB



MOVING WASH
15W x 37 LED PAR
RGB MULTI



**LASER STROBE
BEAM 3IN1 (2)**
3W x 54 LED PAR
RGBW WATERPROOF



WALL WASHER



3x36 RGB MULTI LED OCTA BAR

TECHNICAL SPECIFICATIONS

Voltage	: AC90-240V/50-60Hz
Power Consumption	: 120W
Light Source	: 36 x3W RGB 3in1 Led
Control Signal	: DMX 512,7CH
Operate Mode	: 87W
LCD Display	: 1)Auto-run mode 2)Master/Slave mode 3)DMX controller mode, 6CH
Waterproof rate	: Ip65
Length	: 100cm
Strobe	: 0-20Hz
Weight	: 5kg



3X72 RGBW LED OCTA BAR

TECHNICAL SPECIFICATIONS

LED Qty	: R18, G18, B18, W9, Amb9
Drive Current	: 350mA
Colour Range	: 16.7 million additive RGB colours with fuss saturation control and amber depth control
Input Voltage	: AC100-240V,50-60Hz
Max. Power	: 87W
On Board	: Display for static colour, Auto & Custom control
Protocol	: DMX512
Dimmer	: 0-100%
Strobe	: 0-20Hz
Optics	: 30°(15°, 25° x 6 Optional)
Dimensions	: 990x156x75mm
Weight	: 6kg



S 026

3 x 64 LED

TECHNICAL SPECIFICATIONS

Rate Voltage	: AC100-24V 50Hz-60Hz
Rate Power	: 12W
LEDs	: 64 pcs 3W RGB 3in1 LEDs
Colour	: RGB unlimited colour mixing
Working Place	: Indoor Temperature: -20°C to 45°C Humidity: 0% to 90%
Working Mode	: Built-in programs, stand along, DMX mode, music active, static colour with master-slave
DMX Modes	: 6 Selectable (2, 3, 4, 7, 14, 26)
LEDs Beam Angle	: 25°
Menu Control	: Touch switches
Dimensions (mm)	: 1000 x 70 x 73
Weight	: 4.5kg



LED CRAZY BAR



LED CRAZY BAR

TECHNICAL SPECIFICATIONS

Voltage	: AC100 - 240V 50 / 60HZ
Power	: 5V / 100W
Lamp Beads	: 36 35 35 RGB LED lamp beads
Control Mode	: DMX512, self drive, master slave, voice control, with RDM function
Channels	: CH8, CH40, CH108, CH116
Dimming	: 32 bit 0 - 100% linear dimming
Features	: 36 Segment Single Point Control
Working Temperature	: -30° - 50°
Strobe Frequency	: 1 - 30Hz
Connection	: DMX512 I / O / Power Input / Output
IP Class	: IP20
Product size	: 100.5 x 4 x 13cm (including handle height)
Inner Box Size	: 102 x 7 x 12cm
Outer box size	: 104 x 25 x 28cm (6 pcs / pack)
Net Weight	: 2.3 KG
Gross Weight	: 2.7 KG



8 LENS RGBW RAFTOR LIGHT



FOLLOW / BLINDER

400 WATTS LED BLINDER RGBWW/WW/2 IN 1

TECHNICAL SPECIFICATIONS

Light Source	: 4 Pcs of 100W RGBWW COB(Chip on board) LED, Each LED can be controlled individually
Control Mode	: DMX512, Auto, Master/Slave, Sound
3 DMX Channel Modes	: 4/8CH
Dimmer	: 0-100% linear dimming
Shutter/Strobe	: Electronic
Strobe Rate	: 0 to 30 Hz
Colour Mixing	: Standalone
Colour Temp. Presets	: Yes
Beam Angle	: 60°
Field Angle	: 100°
Colour Temperature	: 3200K (RGBWW)
Data Connectors	: 3-pin XLR (5-pin optional)
Power Cable Length	: 1m standard (customer designed optional)
Single Line Length	: 1m standard (customer designed optional)
Power in&out	: Need to customer designed
Input Voltage	: 100-240 VAC, 50-60 Hz (auto- ranging)
Power	: 400W
Weight	: 15kg
Dimensions	: 40 x 40 x 15cm



200 WATTS LED PROFILE SPOT WITH DMX (RGB/WW/2 IN 1)

TECHNICAL SPECIFICATIONS

Lamp	: LED 200W
Power Supply	: 100V- 240V, 50HZ/60HZ
Power Consumption	: 200W
Control Channel	: 2DMX
Lens	: 19°/26°/36°/50°
Net Weight	: 5.5Kg
Gross Weight	: 7.0Kg
Dimensions (mm)	: 710 X 255 X 255

- Small Volume, Lightweight
- High Quality Optical System



300 WATTS LED PROFILE SPOT WITH DMX (RGB/WW/2 IN 1)

TECHNICAL SPECIFICATIONS

Lamp	: LED 200W
Power Supply	: 100V- 240V, 50HZ/60HZ
Power Consumption	: 200W
Control Channel	: 2DMX
Lens	: 19°/26°/36°/50°
Net Weight	: 5.5Kg
Gross Weight	: 7.0Kg
Dimensions (mm)	: 710 X 255 X 255

- Small Volume, Lightweight
- High Quality Optical System



FOLLOW / BLINDER



LED FOLLOW SPOT WITH DIMMER WITH CASE

TECHNICAL SPECIFICATIONS

Voltage	: AC90-240V,50/60Hz
Light Source	: Led300W
Colour Temperature	: 7500K
Power Consumption	: 550W
Control	: Control panel with bottoms & faders, or DMX
Dart Distance	: 300m
Focus	: Manual focus
1 Colour Wheel	: 5 colours+ open
1 CTO	: Colour temperature filter, 4600K, 3200K, atomization
Dimmer	: 0-100% linearly adjustable+strobe
Iris	: 5-100% linearly adjustable
Cooling	: Forced air cooling
Protect Grade	: IP20,overheating and over voltage protection
Net Weight	: 14kg (without stand)
Fixture Dimension	: 560 × 280 × 220mm (LxWxH)



10R/16R FOLLOW SPOT WITH STAND & FLIGHT CASE

TECHNICAL SPECIFICATIONS

Input Voltage Range	: AC100-240V, 50/60HZ
Power Consumption	: 450W/600W
Lamp	: 230W YODN Lamp/330W YODN Lamp
Colour Temperature	: 6500K
Life Span	: 2000h
Colour	: White, Red, Green, Yellow, Blue
Function	: Focus, Iris, Strobe
Focus	: Electronic focus
Controls	: Electronic control panel
Working Environment	: Up to 40°C
Protection Rate	: Ip20
Housing	: A3+AluminumHousing: A3+Aluminium
Dimensions (mm)	: For Light Body 485 x 290 x 170 For Control Panel 200 x 130 x 30
Net Weight	: 14.5kg



8 HEAD RGB CRAZY LASER



PRO EFFECT LIGHTS

LASER LED FOOTBALL

TECHNICAL SPECIFICATIONS

3 BALLS WITH STRIP (with laser)
 Voltage: AC110/220V | 50-60HZ
 Source: 10W*18PCS
 Power: 180W
 Strip: 5050*144PCS
 Auto, Sound, DMX512
 Net weight: 5.9KG
 Size: 37*37*37.5cm
 Packing Size: 88*46*37cm 2pc/ctn (16.5KG 2PCS/CTN)



S028 LED BAR WITH AURA EFFECTS

TECHNICAL SPECIFICATIONS

AC90-240V 50/60HZ
 Power Source : 60W
 12PCS*3W cold white and warm white and 72 pcs RGB3in1
 SMD5050
 4/6/8/9CH
 DMX, Auto, Sound Master-slave



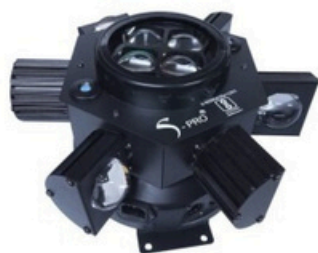
1 x 1000 RGB LED STROBE/PANEL

TECHNICAL SPECIFICATIONS

Voltage : AC110V-240V, 50-60Hz
 Power : 1000W
 Source : 3 in 1 high brightness LED5054 SMD
 Lamp Quantity : 1000 PCS
 Lamp Power : 1.0 W/PCS
 Effect : Colourful Strobe effect & uniform RGB colour mixing system rainbow effect
 Channels : 12CH/7CH/1 CH/Mode
 Control mode : DMX / Sound /Auto
 Strobe Speed : 0-20/s
 Dimmer : 0-100% linear electronic dimming
 IP rated : IP20
 Size(cm) : 54 x 32 x 20.5
 Weight : 8.5kg



100W LED SHARPY (NEW)



LASER DANCE PAR

PRO EFFECT LIGHTS



**LED
FOOTBALL**



**LED AURA
FOOTBALL**



3 WING FINE

NEW 7 EYE LED BLINDER

TECHNICAL SPECIFICATIONS

Working Voltage	: 110-240V 50-60HZ
Light Source	: 7 × 60W LED (customized light source) +168 0.3W RGB
Maximum Power	: 500W
Colour Temperature	: 2200K
Control Mode	: Self-propelled / master-slave online/DMX512
DMX Channel	: 8CH / 32CH
Data Connection	: 3/5 Pin XLR (optional)
Display	: LCD screen
Installation Method	: Tripod support / hanging / mounting base placed on the ground
Shape	: Round
Reflective Bowl Colour	: Silver
Appearance Colour	: Black (standard)/White (customized)
Appearance Size	: 85 x 73 x 15cm
Weight	: 15kg



LIGHT CONTROLLERS



512 DMX CONTROLLING BOARD

TECHNICAL SPECIFICATIONS

- 12 fixtures of up to 16 channels,
- MIDI control thorough MIDI interface
- Built in Microphone
- Power input: DC 9-12V 300mA min
- DMX Output: 3 pin female XLR
- 6 chase each up to 240 scenes
- 30 banks of 8 scenes each for a total 240 scenes
- 8 faders adjust the DMX output level from 0-225
- 2 faders control chase speed and fade time



PILOT 2000

TECHNICAL SPECIFICATIONS

- Universal DMX512 controller, able to control upto 40 computer light
- Each light's maximum channels: 36, 512DMX channels total
- Can control up to 192 dimmer channels
- DMX input/output or RS232 output
- 40 programs or chases, M chases, presets.
Each program(Chase, M chase, preset) upto 40 steps
- Able to use 4 programs, 4 chases, 4 M chase, 4 presets at the same time
- Internal unit library, able to create new unit library in controller
- Able to back up or update data to/from PC with RS232
- MIDI input/MIDI output, internal MIC or sound input



PILOT 2000 SUPER

TECHNICAL SPECIFICATIONS

- Universal DMX512 controller, able to control upto 40 computer light
- Each light's maximum channels is 36, 512 DMX channels in total
- Can control up to 192 dimmer channels
- DMX input/output or RS232 output
- 0 programs or chases, M chases, presets. Each program(Chase, M chase, preset) upto 40 steps
- Able to use 4 programs, 4 chases, 4 M chase, 4 presets at the same time
- Internal unit library, able to create new unit library in controller
- Able to back up or update data to/from PC with RS232
- MIDI input/MIDI output, internal MIC or sound input



DISCO 240 CONTROLLING BOARD



LASER / SPLITTER



1/3/5 WATT RGB LASER

TECHNICAL SPECIFICATIONS

Voltage	: AC96-240V, 50/60HZ
Rating Power	: 30W
Laser	: DPSS
Total Laser Power	: 1000mw R:300mw G:100mw B:600mw
Power Supply	: 90-250VAC,50/60HZ
Scan System	: ILDA 25Kpps
Play Mode	: Sound Active/Auto-Play/Master-Slave/DMX512/PC
Channels	: 12
Internal Patterns	: 256
Net Weight	: 3.65Kg
Gross Weight	: 4.6Kg
Packing Size (mm)	: 310 x 196 x 150



6 HEAD MOVING LASER

TECHNICAL SPECIFICATIONS

3 Watts Red / RGB Beam Laser
Tilt 90°
Pan 240°
Sound/Auto/DMX



8 CH DMX SPLITTER

TECHNICAL SPECIFICATIONS

Power : AC110V-240V
Frequency : 50Hz -60Hz
Signal Input Interface : Standard DMX512 signal, 3/5 pin

- Gold-plated XLR male and female socket in parallel
- Output signal interface use three-pin gold-plated XLR female socket
- Transformer based isolation per channel



**40W RGB
PRO LASER WITH
PANGOLIN FB4**



**10W GREEN
PRO LASER**



**10W RGB
PRO LASER**

SMOKE MACHINE

900/1500W SMOKE MACHINE

TECHNICAL SPECIFICATIONS

Voltage/Frequency	: AC110V,220V,250V / 50-60Hz
Power Consumption	: 1500W
Warm-up time	: 5mins
Output	: 20000cu.ft/min
Tank Capacity	: 2L
Size (mm)	: 480 x 300 x 220
Weight	: 6KG
Control Mode	: Wire control & remote control



1500W DMX SMOKE MACHINE

TECHNICAL SPECIFICATIONS

Voltage/Frequency	: AC110V,220V,250V / 50-60Hz
Power Consumption	: 1500W
Warm-up time	: 5mins
Output	: 20000cu.ft/min
Tank Capacity	: 2L
Size(mm)	: 480 x 300 x 220
Weight	: 6KG
Control Mode	: Wire control & remote control



3000 WATT SMOKE MACHINE

TECHNICAL SPECIFICATIONS

Voltage	: AC110V/230V +_10%
Temperature control	: Electronic
Preheat time	: 12 minutes
Smoke oil capacity	: 6 litres
Spray smoke distance	: 20 metres
The smoke covered	: 40000 cu.ft/min
Control mode	: remote and DMX512 control
machine size	: 72 x 28 x 30cm/piece
Packing size	: 76.5 x 39 x 31cm/piece
Net Weight	: 13 kg/piece Gross Weight : 15 kg/piece



1500 WATT NEW MULTIFLOW SMOKE MACHINE

TECHNICAL SPECIFICATIONS

Power Supply	: AC220-240V,50Hz-60Hz;AC110-127V,50Hz-60Hz
Power Consumption	: 1500W
Control Mode	: DMX 512, wire, remote
Control Distance	: 20-30m
Tank Capacity	: 2.5L
Warm up Time	: 8 min
Smoke Output	: 15000 cu.ft/min
Output Distance	: 8m
Dimension Size (mm)	: 360 x 295 x 137
Packing Size (mm)	: 465 x 365 x 255
Net Weight	: 6.2 kg
Gross Weight	: 7.3 kg



SMOKE MACHINE



1000 WATT HAZER DMX/WIRED REMOTE

TECHNICAL SPECIFICATIONS

Power Consumption	: 1000 Watts
Heat-up Time	: 2 min
Fluid Consumption	: 0.5-8ml/min
DMX-512 Channel	: Ch1- Fan Speed Ch2 - Haze Volume
Fluid-less Protection	: Yes
Self-Cleaning Function	: Yes
Fluid Tank Capacity	: 1.2L



2000 WATT HAZER DMX/WIRED REMOTE

TECHNICAL SPECIFICATIONS

Power Consumption	: 2000 Watts
Heat-up Time	: 2 min
Fluid Consumption	: 0.5-8ml/min
DMX-512 Channel	: CH1- Fan Speed Ch2 - Haze Volume
Fluid-less Protection	: Yes
Self-Cleaning Function	: Yes
Fluid Tank Capacity	: 5L (Leak proof)



500 WATT HAZE MACHINE DMX WITH FLIGHT CASE

TECHNICAL SPECIFICATIONS

Voltage	: AC110/220V
	50-60HZ
Power	: 600W
Control	: DMX512
	Timer & Remote Control
Weight	: 32kg
Size (mm)	: 530 x 390 x 430



SPARKULAR S PRO VERSION 1





SMOKE MACHINE

LED UP SMOKE MACHINE

TECHNICAL SPECIFICATIONS

Power Supply	: AC220-240V,50Hz-60Hz;AC110-127V,50Hz-60Hz
Power Consumption	: 1500W
Control Mode	: DMX 512, wire, remote
Control Distance	: 20-30m
Tank Capacity	: 2.5L
Warm up Time	: 8 min
Smoke Output	: 15000 cu.ft/min
Output Distance	: 8m
Dimension Size (mm)	: 360 x 295 x 137
Packing Size (mm)	: 465 x 365 x 255
Net Weight	: 6.2 kg
Gross Weight	: 7.3 kg



3000 WATT WATER BASE LOW SMOKE MACHINE

TECHNICAL SPECIFICATIONS

Voltage	: AC110V/220V, 50hz/ 60hz
Power	: 3000 watt
Control Mode	: Remote control, DMX512, Time & quantitative control
Packing Size (mm)	: 900 x 550 x 620
Weight	: 80kg
Packing	: Road case (Fly case)
Main Fuel	: Water, and add some haze liquid (1 Litre liquid can use for about 25 hours)



3500 DRY ICE MACHINE

TECHNICAL SPECIFICATIONS

Voltage	: AC 90V-240V 50/60HZ
Power	: 3500W
Normal Heat-up Time	: 30min (3000W)
Electron Temp. Control	: 70°C-80°C
Water Consumption	: 7.5L (up to watertline)
Max Continuous Output Duration	: 5-6min
Max Output Coverage	: 150m²
Net Weight	: 6 kg
Gross Weight	: 8kg
Size (mm)	: 390 x 350 x 340



6000 DRY ICE MACHINE

TECHNICAL SPECIFICATIONS

Voltage	: AC 110V, 220V 50/60Hz
Power	: 6000W
Control	: power control
Warm-up Time	: 20 mins
Water Capacity	: 15 litres
Smoke Output	: 25000 Cuft / Min
Coverage Area	: 80-100 sqm
Weight	: 17 kg
Size (mm)	: 850 x 570 x 810



SPECIAL EFFECTS



1500 WATT SNOW MACHINE

TECHNICAL SPECIFICATIONS

Voltage	: AC110V,220v 50/60HZ
Power	:1500W
Control Method	: wired control
Coverage Area	: 80-100square metres
Drum Capacity	: 5 litre
Weight	: 8kg
Size (mm)	: 580 x 320 x 350



BUBBLE MACHINE WITH DOUBLE RING

TECHNICAL SPECIFICATIONS

Voltage	: AC110-120V,50-60HZ
Power	: 300W
Control	: Handle and Remote Control
Weight	: 10KG
Size (mm)	: 500 x 400 x 460



MINI BUBBLE EFFECT MACHINE

TECHNICAL SPECIFICATIONS

Voltage	: AC110V/220V,50/60HZ
Power	: 60W
Control	: Remote control
Coverage Area	: 10 m2
Weight	: 2kg
Size (mm)	: 240 x 240 x 240



**ELECTRIC CONFETTI
BLOWER**



**LED SMOKE
BUBBLE MACHINE**

SPECIAL EFFECTS

FIRE BALL MACHINE

TECHNICAL SPECIFICATIONS

Voltage	: AC110/220V, 50/60HZ
Power	: 200W
Control	: DMX512 Control
Spray Height	: 1-3 Metres
Fuel	: Oil Cans
Channel	: 2CH
Weight	: 4.6kg
Size(mm)	: 600 x 300 x 250



STADIUM SHOT

TECHNICAL SPECIFICATIONS

Voltage	: AC 110V, 220V 50/60Hz
Power	: 100W
Control	: Power control
Spray Height	: Up to 15 Metres
Weight	: 40kg
Size (mm)	: 800 x 580 x 930



DMX STADIUM SHOT

TECHNICAL SPECIFICATIONS

Voltage	: AC 110V, 220V 50/60Hz
Power	: 100W
Control	: Power control
Spray Height	: Up to 15 Metres
Weight	: 40kg
Size (mm)	: 800 x 580 x 930



CO₂ GUN

TECHNICAL SPECIFICATIONS

Spray Height	: 6-8 Metres
Control	: Manual Control
Hose	: 3 Metres
Weight	: 3.85kg
Size (mm)	: 680 x 280 x 160



LED CO₂ GUN

TECHNICAL SPECIFICATIONS

Spray Height	: 6-8 Metres
Control	: Manual Control
Hose	: 3 Metres
Weight	: 8kg
Size (mm)	: 800 x 300 x 200



SPECIAL EFFECTS



CO₂ JET

TECHNICAL SPECIFICATIONS

Voltage	: AC110/220V,50/60HZ
Power	: 200W
Control	: DMX-512, Electronic Control
Spray Height	: 6-8 Metres
Weight	: 6.5kg
Size (mm)	: 310 x 280 x 280



LED CO₂ JET

TECHNICAL SPECIFICATIONS

Voltage	: AC 110V/220V, 50/60Hz
Power	: 250W
Control	: DMX512 control
Display Colour	: RGB, single colour
CO2 Gas Height	: 8-10 M
Weight	: 10.6kg
Size (mm)	: 300 x 300 x 420



CO₂ CONFETTI RAINBOW MACHINE WITH FLIGHT CASE BIG/SMALL

TECHNICAL SPECIFICATIONS (BIG)

Control	: Manual control
Weight	: 50kg
Size (mm)	: 670 x 380 x 1260

TECHNICAL SPECIFICATIONS (SMALL)

Control	: Manual valve
Weight	: 21kg
Size (mm)	: 620 x 290 x 780



FOAM MACHINE

TECHNICAL SPECIFICATIONS

Voltage	: AC 220V 50Hz
Power	: 1800W
Control	: Manual Control
Distance	: 8m-10m
Bubble capacity	: 10-13m3
Package Size (mm)	: 1090 x 600 x 1160
Gross Weight	: 86kg



SPECIAL EFFECTS

CO₂ CONFETTI GUN

TECHNICAL SPECIFICATIONS

Spray Length	: 6-8m
Material	: Steel+Rubber
Control	: Handle(No Power)
Ribbon Capacity	: 1kg
Hose length	: 3m
Weight	: 5.6kg
Size(cm)	: 73 x 33 x 22.5



CO₂ LED CONFETTI GUN

TECHNICAL SPECIFICATIONS

Spray Length	: 6-8m
Material	: Steel+Rubber
Control	: Handle(No Power)
Ribbon Capacity	: 1kg
Hose length	: 3m
Weight	: 5.6kg
Size(cm)	: 73 x 33 x 22.5



ELECTRIC CONFETTI FIRING MACHINE

TECHNICAL SPECIFICATIONS

Voltage	AC110/220V,50/60HZ
Power	100W
Control	DMX512 Control
Height	6-8 Metres
Weight	6.45kg
Size (mm)	375 x 255 x 265



CO₂ JET DOUBLE NOZZLE



SPECIAL EFFECTS



**CO₂ RAINBOW
BIG SUPER SFX**



**CO₂ RAINBOW
with DMX
BIG SUPER SFX**



**SPARKULAR
SUPER SFX**



**SPARKULAR
FALL SUPER SFX**



**ELECTRIC CONFETTI
BLOWER SUPER**

LED GHOST JET

TECHNICAL SPECIFICATIONS

Voltage	: AC 110V/220V, 50/60Hz
Power	: 250W
Control	: DMX512 control
Display Colour	: RGB, single colour
CO ₂ gas Height	: 8-10 M
Weight	: 10.6kg
Size (mm)	: 300 x 300 x 420



FIRE BALL MACHINE

TECHNICAL SPECIFICATIONS

Voltage	: AC110/220V, 50/60HZ
Power	: 200W
Control	: DMX512 Control
Spray Height	: 1-3 Metres
Fuel	: Oil Cans
Channel	: 2CH
Weight	: 4.6kg
Size(mm)	: 600 x 300 x 250



SPECIAL EFFECTS



3 HEAD CONFETTI FIRING GUN



3 HEAD LED CONFETTI GUN



6 HEAD LED CONFETTI FIRING GUN



5 WAY LED CONFETTI FIRING GUN



LED CP GUN

CONFETTI FIRING GUN

TECHNICAL SPECIFICATIONS

Weight : 10kg
 Dimensions(cm) : 50 x 30 x 23

- Professionally designed special effects for the entertainment industry.
- Designed to resemble a gun.
- Three channels, can each hold a 40cm / 80cm. Electric Confetti Cannon.
- Fastening system for confetti canons.
- Three inputs on top, for the cannons.
- Single or multiple shot.
- Special trigger sensor.
- Built-in rechargeable battery.
- Charge battery with powerCON input.
- LED battery level indicator, will last up to 12 hours
- Built-in laser for easy aim



CLAMPS



TRUSS CLAMP WITH KNOB

TECHNICAL SPECIFICATIONS

Width	: 30mm
Working Load	: 75kg
Fit tubeless OD	: 48-52mm
Material	: Al 6061-T6
Colour	: Natural
Accessories	: Big nut, M10 x 35

- Hexagon bot, wing nut



ALUMINIUM TRUSS CLAMP SMALL

TECHNICAL SPECIFICATIONS

Width	: 30mm
Working Load	: 300kg
Fit tubeless OD	: 38-52mm
Material	: Al 6061-T6
Colour	: Natural
Accessories	: M10 flat head in

- Hexagonal screw, non-slip nut



ALUMINIUM TRUSS CLAMP

TECHNICAL SPECIFICATIONS

Width	: 50mm
Working Load	: 500kg
Fit tubeless OD	: 38-52mm
Material	: Al 6061-T6
Colour	: Bright
Accessories	: M10 flat head in

- Hexagonal screw, non-slip nut



DOUBLE CLAMP

TECHNICAL SPECIFICATIONS

Width	: 50mm
Working Load	: 500kg
Fit tubeless OD	: 38-52mm
Material	: Al 6061-T6
Colour	: Natural

- Double Clamp, moving freely



QUICK CLAMP



HINGE



HALF CONICAL
WITH BOLT



FULL JINTER



MS CLAMP

HOIST & STAND

1 TON MOTOR HOIST

TECHNICAL SPECIFICATIONS

Lifting Capacity	: 1 Ton
Hoist Size	: 348 x 247 x 135mm
Hoist Weight	: 27kg
Electromagnetic brakes Quantity	: 2
Clutch	: Patented Clutch for over load protection
Limit Switch	: Yes
Chain Weight	: 1.05kg/m
Chain Surface	: Galvanized
Chain Guider	: Yes
Chain Length	: 25m (Length can be customized)
Load Hook	: 360° Rotating
Protection Level	: IP 66
Noise Grade	: ≤Db 50



MS WINCH STAND HEAVY WITH DOUBLE "T" (14 FEET)

TECHNICAL SPECIFICATIONS

Height	: 1.7-4 m
Beam	: 2 m
Self Weight	: 25 Kg
Max Load	: 60 Kg



STAND



BOX TRUSS

TECHNICAL SPECIFICATIONS

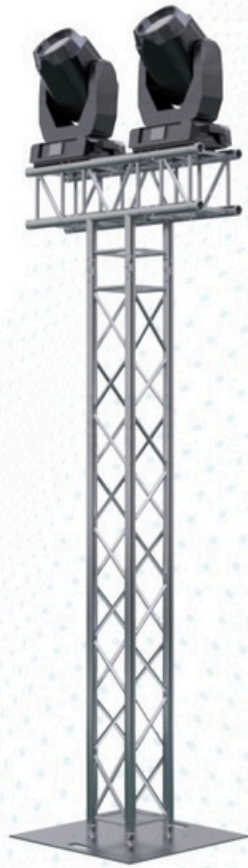
- 60x60x30 ft 4 pillar Box Truss
- 350 x 350 mm Pillar
- 520 x 520 mm Top section
- 50mm pipe with 3 mm thickness
- 25mm braces with 3 mm thickness
- Ladder and criss-cross both



**STAINLESS STEEL STAND
(12FEET)**



SPEAKER STAND



10x6 T-TRUSS

CONSUMABLES



**FOG JUICE
1/5 LTR**



**BUBBLE LIQUID 5 LTRS/
SNOW LIQUID 5 LTRS**



**HAZE OIL
1 LTRS**



**FIRE OIL CAN
(COLOUR RGYB)**



RIBBON FOIL



CONFETTI PAPER/FOIL PAPER



RIBBON PAPER

SAFETY ROPE



STREAMERS

MISCELLANEOUS



**CABLE RAMP/
CABLE RUBBER MAT**



**FDL DIMMER PACK
6KWA x 6CH**



MIRROR BALL



XLR M/F PAIR



SPEAKON



POWERCON



BROWN PIN



Contact us:

 info@vinayakeffects.com

 [@vinayakeffects](https://www.instagram.com/vinayakeffects)

 [vinayakeffects.com](https://www.vinayakeffects.com)

 +91 80943 55999